



C2C-Filet Snowflake Doilies

#D23-003
FREE

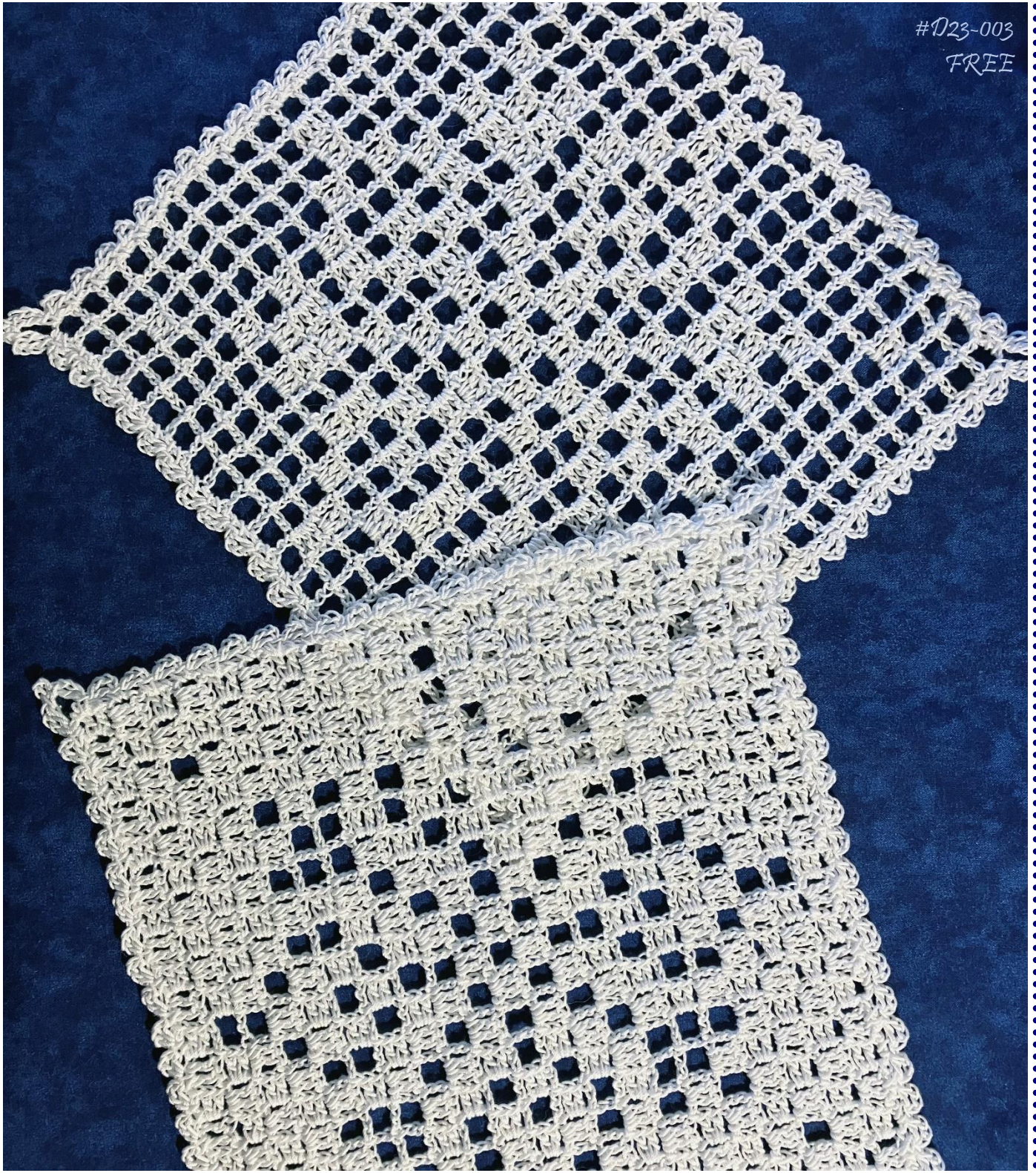


TABLE OF CONTENTS:

	<i>Page</i>
Snowflake Doily	1
Reverse Snowflake Doily	3
Doily Border	4
Special Stitches	5
Abbreviations.....	5
YouTube Tutorial Link.....	5

SKILL LEVEL:

Easy to Intermediate

FINISHED SIZE:

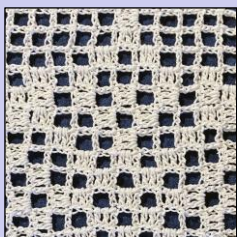
8¼” square at widest point of border

MATERIALS:

- Crochet cotton, size 10*:
 - *Snowflake Doily*: 75 yds. (69 m)
 - *Reverse Snowflake Doily*: 100 yds. (91 m)
- Size No. 2 (1.50 mm) crochet hook *or* size needed to obtain gauge

GAUGE:

Working in pattern:
11 x 11 grid = 4” square

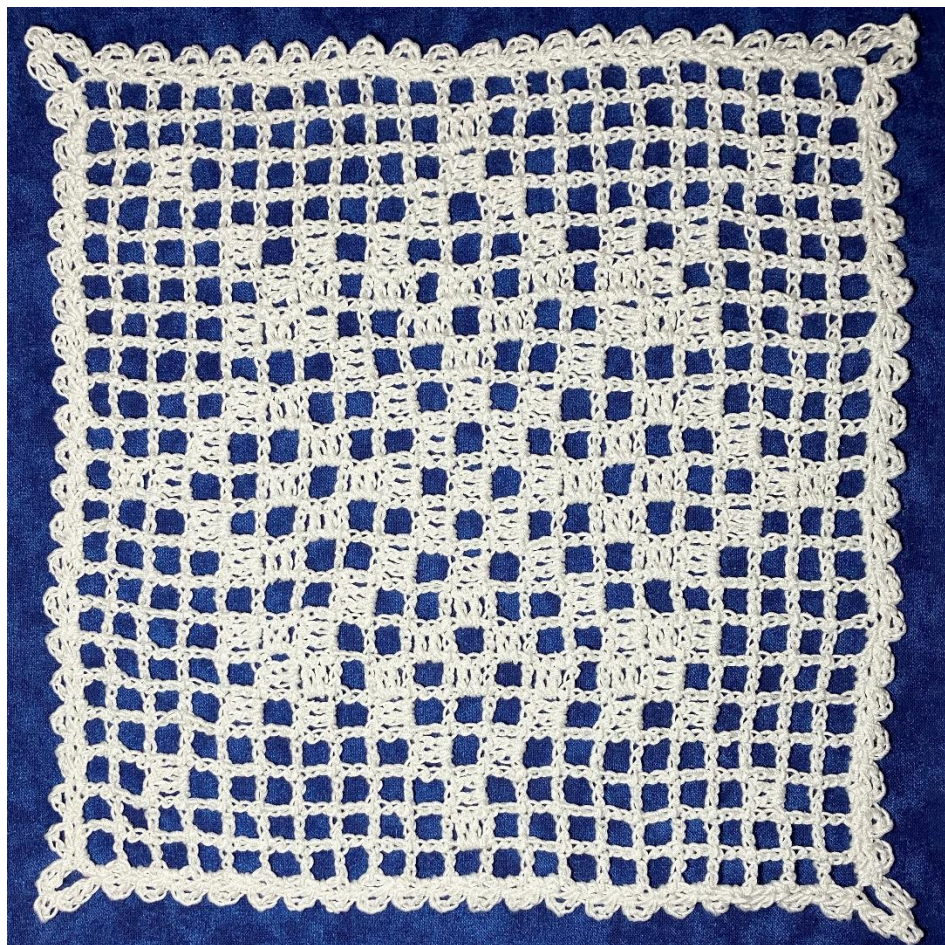


SPECIAL STITCHES:

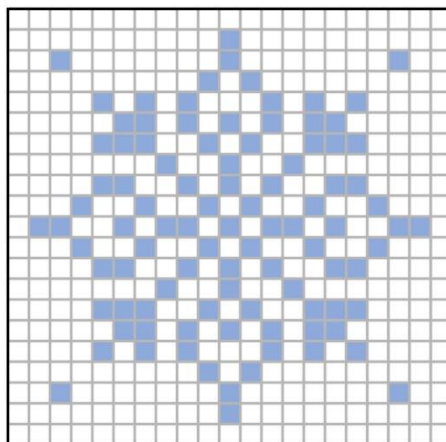
Special stitches are defined and noted in ***bold italics*** for the first occurrence and/or defined in the Special Stitches section on page 5.



*DMC Baroque, 100% Crochet Cotton, size 10, in White was used for models.



SNOWFLAKE DOILY



Chains are always counted as stitches, unless noted otherwise.

Row 1 (RS):

Ch 9, dc in 9th ch from hook, turn.

Row 2 (WS):

[Ch 8, sk dc and next 2 sts, sl st in next ch – ***beg open space*** made], [ch 5, sk next 2 ch, dc in next ch – ***end open space*** made], turn.

Row 3:

Beg open space, [ch 5, sk ch-sp, sl st and next 2 sts, sl st in next ch – ***open space*** made], end open space, turn.

Row 4:

Beg open space, 2 open spaces, end open space, turn.

Row 5:

Beg open space, 1 open space, [ch 3, 2 dc in ch-sp, sk sl st and next 2 sts, sl st in next ch – ***block*** made], 1 open space, end open space, turn.

Row 6:

Beg open space, 4 open spaces, end open space, turn.

Row 7:

Beg open space, 5 open spaces, end open space, turn.

Row 8:

Beg open space, 6 open spaces, end open space, turn.

Row 9:

Beg open space, 3 open spaces, 1 block, 3 open spaces, end open space, turn.

Row 10:

Beg open space, 8 open spaces, end open space, turn.

Row 11:

Beg open space, 3 open spaces, 3 blocks, 3 open spaces, end open space, turn.

Row 12:

Beg open space, 1 block, 3 open spaces, 2 blocks, 3 open spaces, 1 block, end open space, turn.

Row 13:

Beg open space, 1 open space, 3 blocks, 1 open space, 1 block, 1 open space, 3 blocks, 1 open space, end open space, turn.

Row 14:

Beg open space, 4 open spaces, 1 block, 2 open spaces, 1 block, 4 open spaces, end open space, turn.

Row 15:

Beg open space, 2 open spaces, (1 block, 3 open spaces) twice, 1 block, 2 open spaces, end open space, turn.

Row 16:

Beg open space, 4 open spaces, 2 blocks, 2 open spaces, 2 blocks, 4 open spaces, end open space, turn.

Row 17:

Beg open space, (3 open spaces, 1 block) 3 times, 3 open spaces, end open space, turn.

Row 18:

Beg open space, 4 open spaces, 3 blocks, 2 open spaces, 3 blocks, 4 open spaces, end open space, turn.

Row 19:

Beg open space, 3 open spaces, 1 block, 3 open spaces, 3 blocks, 3 open spaces, 1 block, 3 open spaces, end open space, turn.

Row 20:

Beg open space, 4 open spaces, 1 block, 8 open spaces, 1 block, 4 open spaces, end open space, turn.

Row 21:

Beg open space, 1 open space, 1 block, 1 open space, 13 blocks, 1 open space, 1 block, 1 open space, end open space, turn.

Row 22:

Sk 1st dc, sl st in each of next 3 ch, 5 open spaces, 1 block, 8 open spaces, 1 block, 4 open spaces, [ch 2 sk ch-sp, sl st and next 2 sts, dc in next ch – *dec open space* made], turn.

Row 23:

Work 4 open spaces, 1 block, 3 open spaces, 3 blocks, 3 open spaces, 1 block, 3 open spaces, dec open space, turn.

Row 24:

Work 5 open spaces, 3 blocks, 2 open spaces, 3 blocks, 4 open spaces, dec open space, turn.

Row 25:

Work 4 open spaces, (1 block, 3 open spaces) 3 times, dec open space, turn.

Row 26:

Work 5 open spaces, 2 blocks, 2 open spaces, 2 blocks, 4 open spaces, dec open space, turn.

Row 27:

Work (3 open spaces, 1 block) 3 times, 2 open spaces, dec open space, turn.

Row 28:

Work 5 open spaces, 1 block, 2 open spaces, 1 block, 4 open spaces, dec open space, turn.

Row 29:

Work 2 open spaces, 3 blocks, 1 open space, 1 block, 1 open space, 3 blocks, 1 open space, dec open space, turn.

Row 30:

Work 1 open space, 1 block, 3 open spaces, 2 blocks, 3 open spaces, 1 block, dec open space, turn.

Row 31:

Work 4 open spaces, 3 blocks, 3 open spaces, dec open space, turn.

Row 32:

Work 9 open spaces, dec open space, turn.

Row 33:

Work 4 open spaces, 1 block, 3 open spaces, dec open space, turn.

Row 34:

Work 7 open spaces, dec open space, turn.

Row 35:

Work 6 open spaces, dec open space, turn.

Row 36:

Work 5 open spaces, dec open space, turn.

Row 37:

Work 2 open spaces, 1 block, 1 open space, dec open space, turn.

Row 38:

Work 3 open spaces, dec open space, turn.

Row 39:

Work 2 open spaces, dec open space, turn.

Row 40:

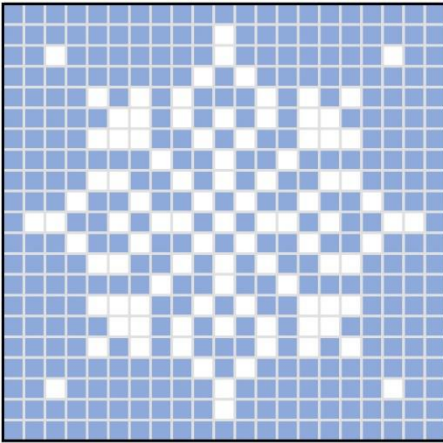
Work 1 open space, dec open space, turn.

Row 41:

Work 1 open space. Do not turn. Continue to Doily Border.



REVERSE SNOWFLAKE DOILY



Chains are always counted as stitches, unless noted otherwise.

Row 1 (RS):

Ch 7, dc in 5th ch from hook, dc in each of rem 2 ch.

Row 2 (WS):

[Ch 6, dc in 5th and 6th chs from hook, sk dc and next 2 sts, sl st in next ch – **beg block** made], [ch 3, 2 dc in ch-sp, dc in 3rd ch made of beg chs of prev row – **end block** made], turn.

Row 3:

Beg block, [ch 3, 2 dc in ch-sp, sk sl st and next 2 sts, sl st in next ch – **block** made], end block, turn.

Row 4:

Beg block, 2 blocks, end block, turn.

Row 5:

Beg block, 1 block, [ch 5, sk ch-sp, sl st and next 2 sts, sl st in next ch – **open space** made], 1 block, end block, turn.

Row 6:

Beg block, 4 blocks, end block, turn.

Row 7:

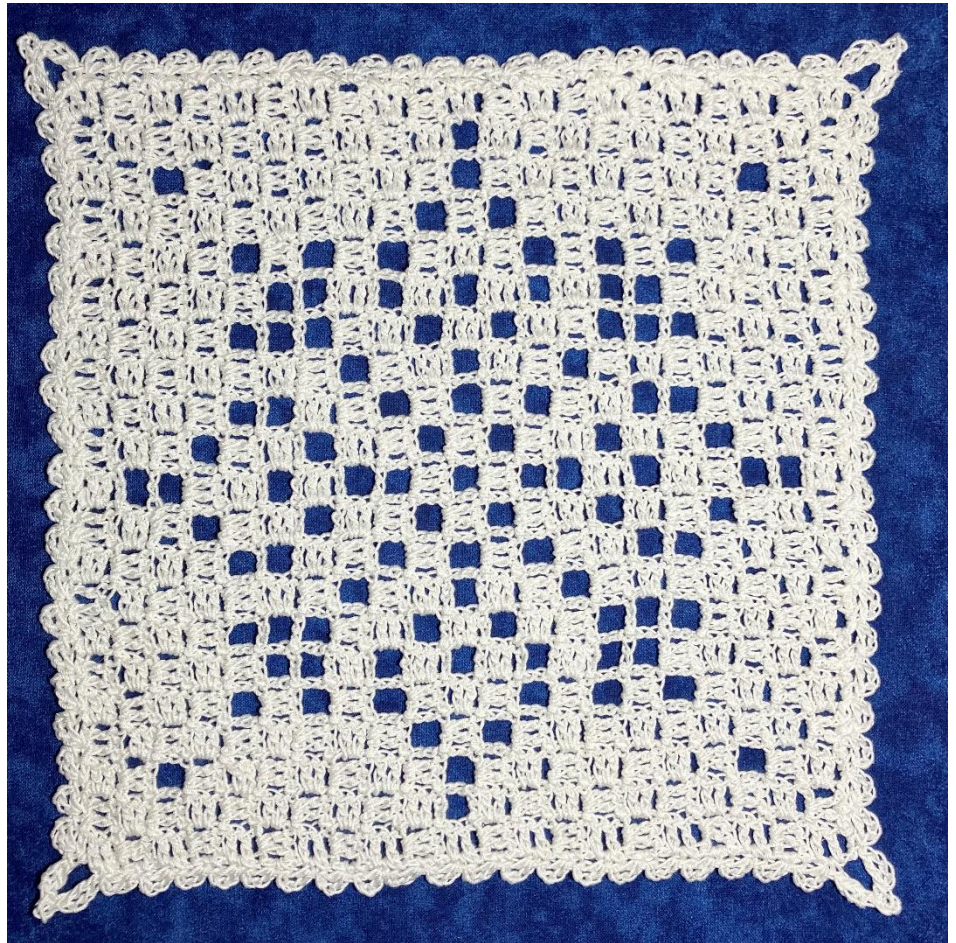
Beg block, 5 blocks, end block, turn.

Row 8:

Beg block, 6 blocks, end block, turn.

Row 9:

Beg block, 3 blocks, 1 open space, 3 blocks, end block, turn.



Row 10:

Beg block, 8 blocks, end block, turn.

Row 11:

Beg block, 3 blocks, 3 open spaces, 3 blocks, end block, turn.

Row 12:

Beg block, 1 open space, 3 blocks, 2 open spaces, 3 blocks, 1 open space, end block, turn.

Row 13:

Beg block, 1 block, 3 open spaces, 1 block, 1 open space, 1 block, 3 open spaces, 1 block, end block, turn.

Row 14:

Beg block, 4 blocks, 1 open space, 2 blocks, 1 open space, 4 blocks, end block, turn.

Row 15:

Beg block, 2 blocks, (1 open space, 3 blocks) twice, 1 open space, 2 blocks, end block, turn.

Row 16:

Beg block, 4 blocks, 2 open spaces, 2 blocks, 2 open spaces, 4 blocks, end block, turn.

Row 17:

Beg block, (3 blocks, 1 open space) 3 times, 3 blocks, end block, turn.

Row 18:

Beg block, 4 blocks, 3 open spaces, 2 blocks, 3 open spaces, 4 blocks, end block, turn.

Row 19:

Beg block, 3 blocks, 1 open space, 3 blocks, 3 open spaces, 3 blocks, 1 open space, 3 blocks, end block, turn.

Row 20:

Beg block, 4 blocks, 1 open space, 8 blocks, 1 open space, 4 blocks, end block, turn.

Row 21:

Beg block, 1 block, 1 open space, 1 block, 13 open spaces, 1 block, 1 open space, 1 block, end block, turn.

Row 22:

Sk 1st dc, sl st in each of next 2 dc and ch, 5 blocks, 1 open space, 8 blocks, 1 open space, 5 blocks, turn.

Row 23:

Sl st in each of next 2 dc and ch, 4 blocks, 1 open space, 3 blocks, 3 open spaces, 3 blocks, 1 open space, 4 blocks, turn.

Row 24:

Sl st in each of next 2 dc and ch, 5 blocks, 3 open spaces, 2 blocks, 3 open spaces, 5 blocks, turn.

Row 25:

Sl st in each of next 2 dc and ch, 4 blocks, (1 open space, 3 blocks) twice, 1 open space, 4 blocks, turn.

Row 26:

Sl st in each of next 2 dc and ch, 5 blocks, 2 open spaces, 2 blocks, 2 open spaces, 5 blocks, turn.

Row 27:

Sl st in each of next 2 dc and ch, (3 blocks, 1 open space) 3 times, 3 blocks, turn.

Row 28:

Sl st in each of next 2 dc and ch, 5 blocks, 1 open space, 2 blocks, 1 open space, 5 blocks, turn.

Row 29:

Sl st in each of next 2 dc and ch, 2 blocks, 3 open spaces, 1 block, 1 open space 1 block, 3 open spaces, 2 blocks, turn.

Row 30:

Sl st in each of next 2 dc and ch, 1 block, 1 open space, 3 blocks, 2 open spaces, 3 blocks, 1 open space, 1 block, turn.

Row 31:

Sl st in each of next 2 dc and ch, 4 blocks, 3 open spaces, 4 blocks, turn.

Row 32:

Sl st in each of next 2 dc and ch, 10 blocks, turn.

Row 33:

Sl st in each of next 2 dc and ch, 4 blocks, 1 open space, 4 blocks, turn.

Row 34:

Sl st in each of next 2 dc and ch, 8 blocks, turn.

Row 35:

Sl st in each of next 2 dc and ch, 7 blocks, turn.

Row 36:

Sl st in each of next 2 dc and ch, 6 blocks, turn.

Row 37:

Sl st in each of next 2 dc and ch, 2 blocks, 1 open space, 2 blocks, turn.

Row 38:

Sl st in each of next 2 dc and ch, 4 blocks, turn.

Row 39:

Sl st in each of next 2 dc and ch, 3 blocks, turn.

Row 40:

Sl st in each of next 2 dc and ch, 2 blocks, turn.

Row 41:

Sl st in each of next 2 dc and ch, 1 block. Do not turn. Continue to Doily Border.

DOILY BORDER

The border is worked in the squares (open spaces or blocks) around the outer edge of the doily as follows: when working into an open space – work specified stitches as if working into a ch-sp; when working into a block, depending on which end of the row you’re working into – either work specified sts around the dc as if working into a ch-sp or between the two dc. *See Figure 1.*

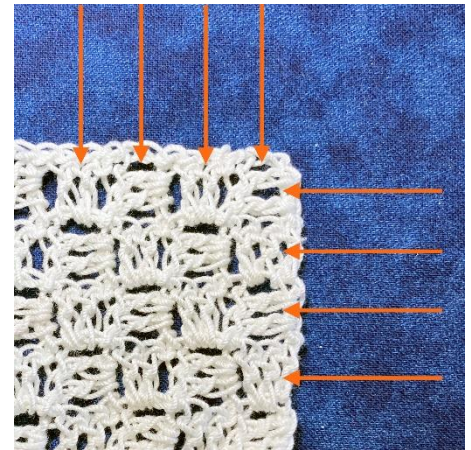


Figure 1. Border Stitch Placement When Working in Blocks

With RS still facing, sl st in next square, ch 1, sc in same square, ♥ch 3, dc *in center of sc* just made, sc in next square, ♥ rep from ♥ to ♥ 18 more times – *last sc should be in corner square,*

♦ch 3, dc in center of sc just made, ch 3, sc *thru top* of dc just made, ch 3, dc in center of sc just made; sc in same corner square to begin next side, ◇ rep from ♥ to ♥ 20 times – *last sc should be in corner square,*♦

rep from ♦ to ♦ for each of next 2 sides,

rep from ♦ to ◇ once more, ch 3, dc in center of sc just made, join with sl st in beg sc. Fasten off and weave in ends.

*** Special Stitches ***

beg block – ch 6, dc in 5th and 6th chs from hook, sk dc and next 2 sts, sl st in next ch

beg open space – ch 8, sk dc and next 2 sts, sl st in next ch

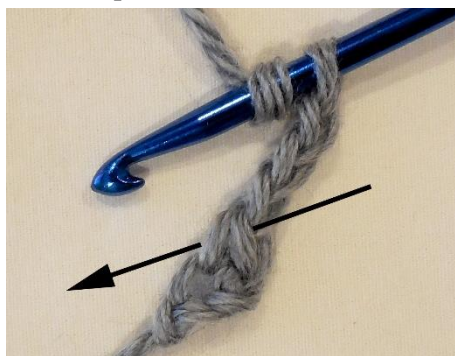
block – ch 3, 2 dc in ch-sp, sk sl st and next 2 sts, sl st in next ch

dec open space – ch 2 sk ch-sp, sl st and next 2 sts, dc in next ch

end block – ch 3, 2 dc in ch-sp, dc in 3rd ch made of beg chs of prev row

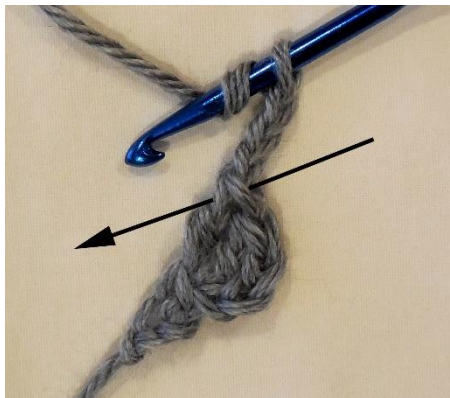
end open space – ch 5, sk next 2 ch, dc in next ch

in center of sc – work indicated st by inserting hook thru one horizontal bar and one vertical bar of sc (see photo for hook placement)



open space – ch 5, sk ch-sp, sl st and next 2 sts, sl st in next ch

thru top - work indicated st by inserting hook thru one horizontal bar and one vertical bar at top of specified st (see photo for hook placement)



ABBREVIATIONS:

beg beginning
 ch(s) chain(s)
 dc double crochet
 dec decrease
 lp(s) loop(s)
 rem remaining
 rep repeat
 RS right side
 sc single crochet
 sk skip
 sl st slip stitch
 sp space
 st(s) stitch(es)
 thru through
 WS wrong side
 yo yarn over



Visit my YouTube channel for help getting started
 on this corner-to-corner and filet crochet hybrid project!

[C2C-Filet Crochet Hybrid Technique: Learning the Stitches!](#)