



# Golden Leaves blanket

## ABBREVIATIONS

St (sts): stitch (stitches)

RS, WS: right side, wrong side

Rep: repeat

K: knit

P: purl

K2tog: knit 2 together

Ssk: slip slip knit

S2kp: slip 2 knitwise together, knit 1, pass slipped stitches over

M1r: make 1 right

M1l: make 1 left

*The blanket I made is approximately 32 x 40 in (wide x long). It was knit using 1100-1200m of worsted weight yarn and US size 6 knitting needles.*

*You can easily customize the size of your blanket by casting on a multiple of 18 sts, plus 27.*

## **GOLDEN LEAVES PATTERN**

**Cast on 171 sts**

### **Garter stitch border**

Rows 1 - 10: Knit.

### **Lace pattern**

Row 11 (Right side): K11, p2, \*k1, p2, k13, p2; rep from \* 8 times, k1, p2, k11.

Row 12: K13, p1, \*k17, p1; rep from \* 8 times, k13.

Row 13: K9, k2tog, p2, yo, \*k1, yo, p2, ssk, k9, k2tog, p2, yo;  
rep from \* 8 times, k1, yo, p2, ssk, k9.

Row 14: K12, p2, \*p1, k15, p2; rep from \* 8 times, p1, k12.

Row 15: K8, k2tog, p2, k1, yo, \*k1, yo, k1, p2, ssk, k7, k2tog, p2, k1, yo;  
rep from \* 8 times, k1, yo, k1, p2, ssk, k8.

Row 16: K11, p3, \*p2, k13, p3; rep from \* 8 times, p2, k11.

Row 17: K7, k2tog, p2, k2, yo, \*k1, yo, k2, p2, ssk, k5, k2tog, p2, k2, yo;  
rep from \* 8 times, k1, yo, k2, p2, ssk, k7.

Row 18: K10, p4, \*p3, k11, p4; rep from \* 8 times, p3, k10.

Row 19: K6, k2tog, p2, k2, yo, k1, \*k2, yo, k2, p2, ssk, k3, k2tog, p2, k2, yo, k1;  
rep from \* 8 times, k2, yo, k2, p2, ssk, k6.

Row 20: K9, p5, \*p4, k9, p5; rep from \* 8 times, p4, k9.

Row 21: K5, k2tog, p2, k2, yo, ssk, yo,

\*k1, yo, k2tog, yo, k2, p2, ssk, k1, k2tog, p2, k2, yo, ssk, yo;

rep from \* 8 times, k1, yo, k2tog, yo, k2, p2, ssk, k5.

Row 22: K8, p6, \*p5, k7, p6;

rep from \* 8 times, p5, k8.

Row 23: K4, k2tog, p2, k2, yo, ssk, k1, yo,

\*k1, yo, k1, k2tog, yo, k2, p2, S2KP, p2, k2, yo, ssk, k1, yo;

rep from \* 8 times, k1, yo, k1, k2tog, yo, k2, p2, ssk, k4.

Row 24: K7, p7, \*p6, k2, p1, k2, p7; rep from \* 8 times, p6, k7.

### **Main pattern**

Row 25: K5, p2, k3, yo, ssk, k1, \*k2, k2tog, yo, k3, p2, k1, p2, k3, yo, ssk, k1;

rep from \* 8 times, k2, k2tog, yo, k3, p2, k5.

Row 26: K7, p7, \*p6, k2, p1, k2, p7; rep from \* 8 times, p6, k7.

Row 27: K5, m1l, p2, ssk, k2, yo, ssk,

\*k1, k2tog, yo, k2, k2tog, p2, yo, k1, yo, p2, ssk, k2, yo, ssk;

rep from \* 8 times, k1, k2tog, yo, k2, k2tog, p2, m1r, k5.

Row 28: K8, p6, \*p5, k2, p3, k2, p6; rep from \* 8 times, p5, k8.

Row 29: K5, m1l, k1, p2, ssk, k2, yo,

\*S2KP, yo, k2, k2tog, p2, (k1, yo) × 2, k1, p2, ssk, k2, yo;

rep from \* 8 times, S2KP, yo, k2, k2tog, p2, k1, m1r, k5.

Row 30: K9, p5, \*p4, (k2, p5) × 2; rep from \* 8 times, p4, k9.

Row 31: K5, m1l, k2, p2, ssk, k2, \*k3, k2tog, p2, k2, yo, k1, yo, k2, p2, ssk, k2;

rep from \* 8 times, k3, k2tog, p2, k2, m1r, k5.

Row 32: K10, p4, \*p3, k2, p7, k2, p4; rep from \* 8 times, p3, k10.

Row 33: K5, m1l, k3, p2, ssk, k1, \*k2, k2tog, p2, k2, yo, k3, yo, k2, p2, ssk, k1;  
rep from \* 8 times, k2, k2tog, p2, k3, m1r, k5.

Row 34: K11, p3, \*p2, k2, p9, k2, p3; rep from \* 8 times, p2, k11.

Row 35: K5, m1l, k4, p2, ssk,  
\*k1, k2tog, p2, k2, yo, k2tog, yo, k1, yo, ssk, yo, k2, p2, ssk;  
rep from \* 8 times, k1, k2tog, p2, k4, m1r, k5.

Row 36: K12, p2, \*p1, k2, p11, k2, p2; rep from \* 8 times, p1, k12.

Row 37: K5, m1l, k5, p2, \*S2KP, p2, k2, yo, k2tog, (k1, yo) × 2, k1, ssk, yo, k2, p2;  
rep from \* 8 times, S2KP, p2, k5, m1r, k5.

Row 38: K13, p1, \*k2, p13, k2, p1; rep from \* 8 times, k13.

Row 39: K11, p2, \*k1, p2, k3, yo, ssk, k3, k2tog, yo, k3, p2;  
rep from \* 8 times, k1, p2, k11.

Row 40: K13, p1, \*k2, p13, k2, p1; rep from \* 8 times, k13.

Row 41: K9, k2tog, p2, yo,  
\*k1, yo, p2, ssk, k2, yo, ssk, k1, k2tog, yo, k2, k2tog, p2, yo;  
rep from \* 8 times, k1, yo, p2, ssk, k9.

Row 42: K12, p2, \*p1, k2, p11, k2, p2; rep from \* 8 times, p1, k12.

Row 43: K8, k2tog, p2, k1, yo,  
\*k1, yo, k1, p2, ssk, k2, yo, S2KP, yo, k2, k2tog, p2, k1, yo;  
rep from \* 8 times, k1, yo, k1, p2, ssk, k8.

Row 44: K11, p3, \*p2, k2, p9, k2, p3; rep from \* 8 times, p2, k11.

Row 45: K7, k2tog, p2, k2, yo, \*k1, yo, k2, p2, ssk, k5, k2tog, p2, k2, yo;  
rep from \* 8 times, k1, yo, k2, p2, ssk, k7.

Row 46: K10, p4, \*p3, k2, p7, k2, p4; rep from \* 8 times, p3, k10.

Row 47: K6, k2tog, p2, k2, yo, k1,

\*k2, yo, k2, p2, ssk, k3, k2tog, p2, k2, yo, k1;

rep from \* 8 times, k2, yo, k2, p2, ssk, k6.

Row 48: K9, p5, \*p4, (k2, p5) × 2; rep from \* 8 times, p4, k9.

Row 49: K5, k2tog, p2, k2, yo, ssk, yo,

\*k1, yo, k2tog, yo, k2, p2, ssk, k1, k2tog, p2, k2, yo, ssk, yo;

rep from \* 8 times, k1, yo, k2tog, yo, k2, p2, ssk, k5.

Row 50: K8, p6, \*p5, k2, p3, k2, p6; rep from \* 8 times, p5, k8.

Row 51: K4, k2tog, p2, k2, yo, ssk, k1, yo,

\*k1, yo, k1, k2tog, yo, k2, p2, S2KP, p2, k2, yo, ssk, k1, yo;

rep from \* 8 times, k1, yo, k1, k2tog, yo, k2, p2, ssk, k4.

Row 52: K7, p7, \*p6, k5, p7; rep from \* 8 times, p6, k7.

Repeat rows 25-52 until you reach desired length. Go on to knit rows 53-65.

Row 53: K5, p2, k3, yo, ssk, k1,

\*k2, k2tog, yo, k3, p2, k1, p2, k3, yo, ssk, k1;

rep from \* 8 times, k2, k2tog, yo, k3, p2, k5.

Row 54: K7, p7, \*p6, k2, p1, k2, p7\*, p6, k7.

Row 55: K5, m1l, p2, ssk, k2, yo, ssk,

\*k1, k2tog, yo, k2, k2tog, p2, m1r, k1, m1l, p2, ssk, k2, yo, ssk;

rep from \* 8 times, k1, k2tog, yo, k2, k2tog, p2, m1r, k5.

Row 56: K8, p6, \*p5, k7, p6; rep from \* 8 times, p5, k8.

Row 57: K5, m1l, k1, p2, ssk, k2, yo,

\*S2KP, yo, k2, k2tog, p2, k1, m1r, k1, m1l, k1, p2, ssk, k2, yo;

rep from \* 8 times, S2KP, yo, k2, k2tog, p2, k1, m1r, k5.

Row 58: K9, p5, \*p4, k9, p5; rep from \* 8 times, p4, k9.

Row 59: K5, m1l, k2, p2, ssk, k2,

\*k3, k2tog, p2, k2, m1r, k1, m1l, k2, p2, ssk, k2;

rep from \* 8 times, k3, k2tog, p2, k2, m1r, k5.

Row 60: K10, p4, \*p3, k11, p4; rep from \* 8 times, p3, k10.

Row 61: K5, m1l, k3, p2, ssk, k1,

\*k2, k2tog, p2, k3, m1r, k1, m1l, k3, p2, ssk, k1;

rep from \* 8 times, k2, k2tog, p2, k3, m1r, k5.

Row 62: K11, p3, \*p2, k13, p3; rep from \* 8 times, p2, k11.

Row 63: K5, m1l, k4, p2, ssk, \*k1, k2tog, p2, k4, p1, k1, m1l, k4, p2, ssk;

rep from \* 8 times, k1, k2tog, p2, k4, m1r, k5.

Row 64: K12, p2, \*p1, k15, p2; rep from \* 8 times, p1, k12.

Row 65: K5, m1l, k5, p2, \*S2KP, p2, k5, m1r, k1, m1l, k5, p2;

rep from \* 8 times, S2KP, p2, k5, m1r, k5.

### **Garter stitch border**

Rows 66 - 76: Knit.

### **Finishing**

Bind off loosely.

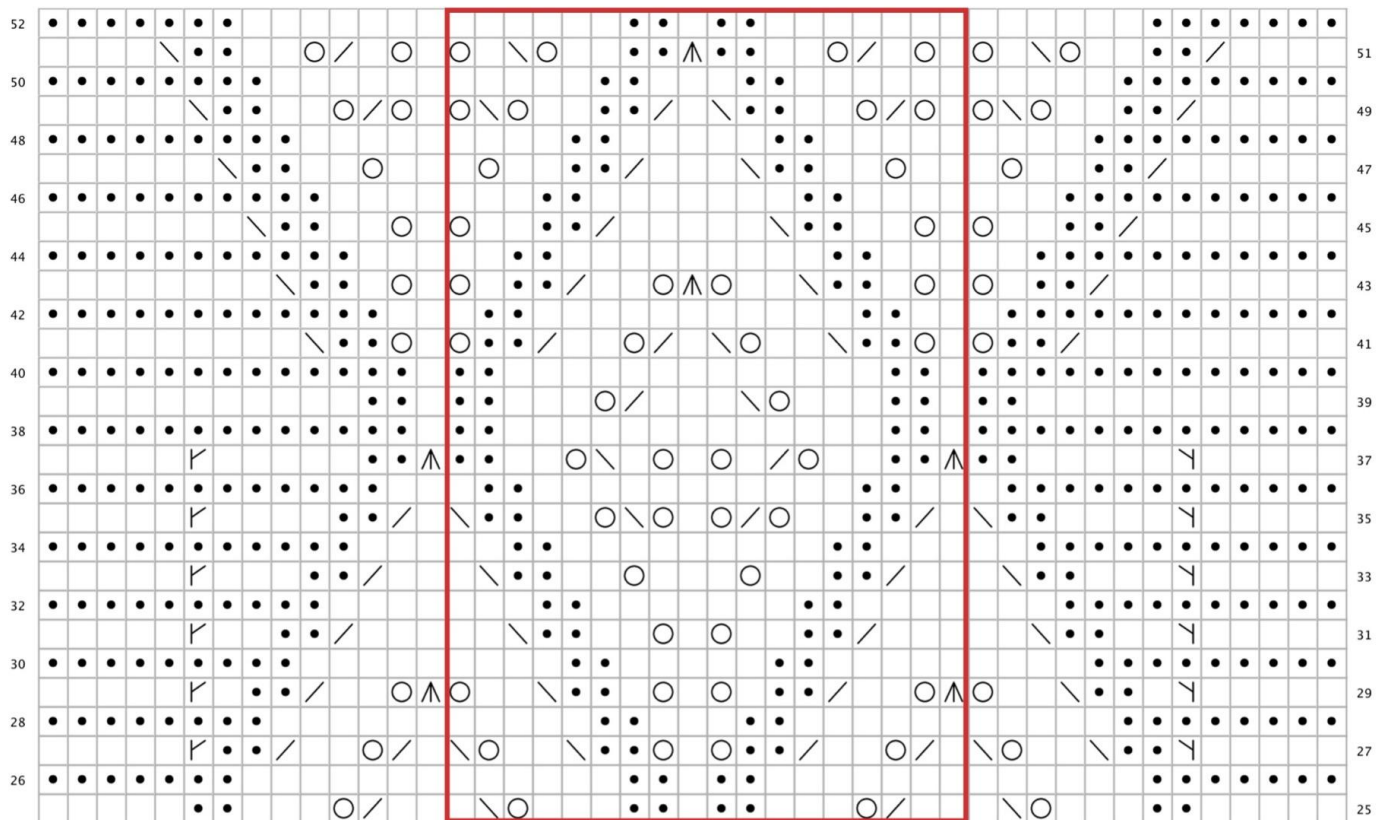
Weave in all ends, block as desired.

*If you have any questions regarding this pattern, please feel free to email me at [nalhcib@gmail.com](mailto:nalhcib@gmail.com). My English is very bad, so please don't ask difficult questions 😞*

*I hope the patterns on [my blog](#) and [Ravelry](#) continue to inspire you!*

*Happy knitting,*

*Nalhcib*



### Key

- |  |   |   |
|--|---|---|
|  RS: knit<br>WS: purl |  k2tog |  m1 left leaning  |
|  RS: purl<br>WS: knit |  ssk   |  m1 right leaning |
|  yo                   |  s2kp  |   |