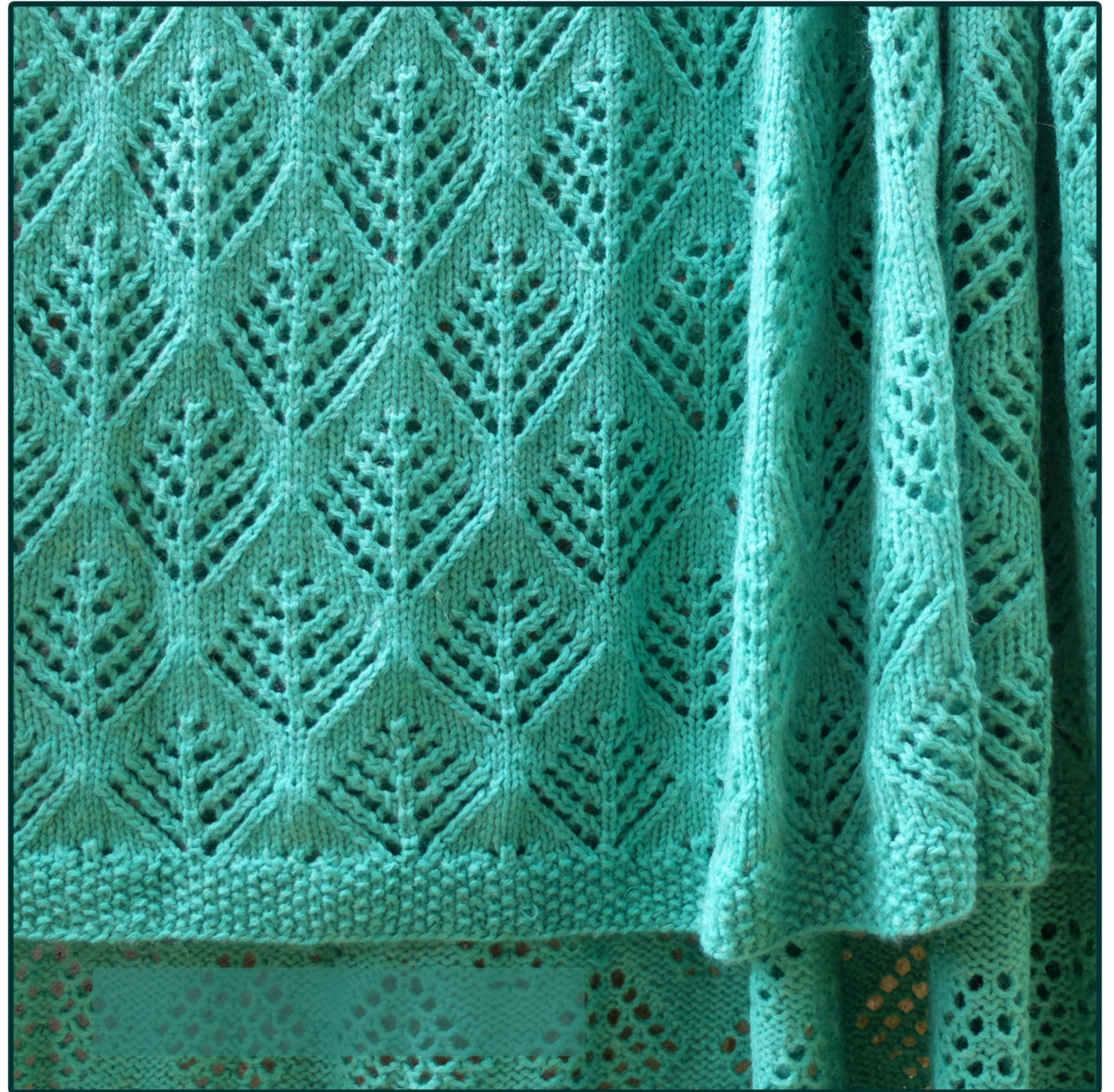


PINE TREE BLANKET



Needles: US 6 - 4.0mm.

Yarn: Etrofil Bambino Lux Wool, 8 skeins.

Finished Measurements: Approx. 44" x 50".

ABBREVIATIONS

K, P: knit, purl.

Yo: yarn over.

K2tog: knit 2 sts together.

Ssk: Slip slip knit.

BLANKET

Cast on 195 sts.

Knit 10 rows Seed st, all rows: *K1, p1; rep from *, k1.

PINE TREE PATTERN

Row 1 (RS): (K1, p1) ×3, [k1, yo, ssk, k9, k2tog, yo] ×13, (k1, p1) ×3, k1.

Row 2 and all wrong side rows: (K1, p1) ×2, k1, p185, (k1, p1) ×2, k1.

Row 3: (K1, p1) ×3, [k2, yo, ssk, k7, k2tog, yo, k1] ×13, (k1, p1) ×3, k1.

Row 5: (K1, p1) ×3, [k1, (yo, ssk) ×2, k5, (k2tog, yo) ×2] ×13, (k1, p1) ×3, k1.

Row 7: (K1, p1) ×3, [k2, (yo, ssk) ×2, k3, [k2tog, yo) ×2, k1] ×13, (k1, p1) ×3, k1.

Row 9: (K1, p1) ×3, [k1, (yo, ssk) ×3, k1, (k2tog, yo) ×3] ×13, (k1, p1) ×3, k1.

Row 11: (K1, p1) ×3, [k2, (yo, ssk) ×2, k3, [k2tog, yo) ×2, k1] ×13, (k1, p1) ×3, k1.

Row 13: (K1, p1) ×3, [k1, (yo, ssk) ×2, k5, (k2tog, yo) ×2] ×13, (k1, p1) ×3, k1.

Row 15: (K1, p1) ×3, [k2, yo, ssk, k7, k2tog, yo, k1] ×13, (k1, p1) ×3, k1.

Row 17: (K1, p1) ×3, [(k1, yo, ssk, k2, k2tog, yo) ×2] ×13, (k1, p1) ×3, k1.

Row 19: (K1, p1) ×3, [k4, k2tog, yo, k3, yo, ssk, k3] ×13, (k1, p1) ×3, k1.

Row 21: (K1, p1) ×3, [k3, [k2tog, yo) ×2, k1, (yo, ssk) ×2, k2] ×13, (k1, p1) ×3, k1.

Row 23: (K1, p1) ×3, [k2, (k2tog, yo) ×2, k3, [yo, ssk) ×2, k1] ×13, (k1, p1) ×3, k1.

Row 25: (K1, p1) ×3, [k1, (k2tog, yo) ×3, k1, (yo, ssk) ×3] ×13, (k1, p1) ×3, k1.

Row 27: (K1, p1) ×3, [k2, (k2tog, yo) ×2, k3, [yo, ssk) ×2, k1] ×13, (k1, p1) ×3, k1.

Row 29: (K1, p1) ×3, [k3, [k2tog, yo) ×2, k1, (yo, ssk) ×2, k2] ×13, (k1, p1) ×3, k1.

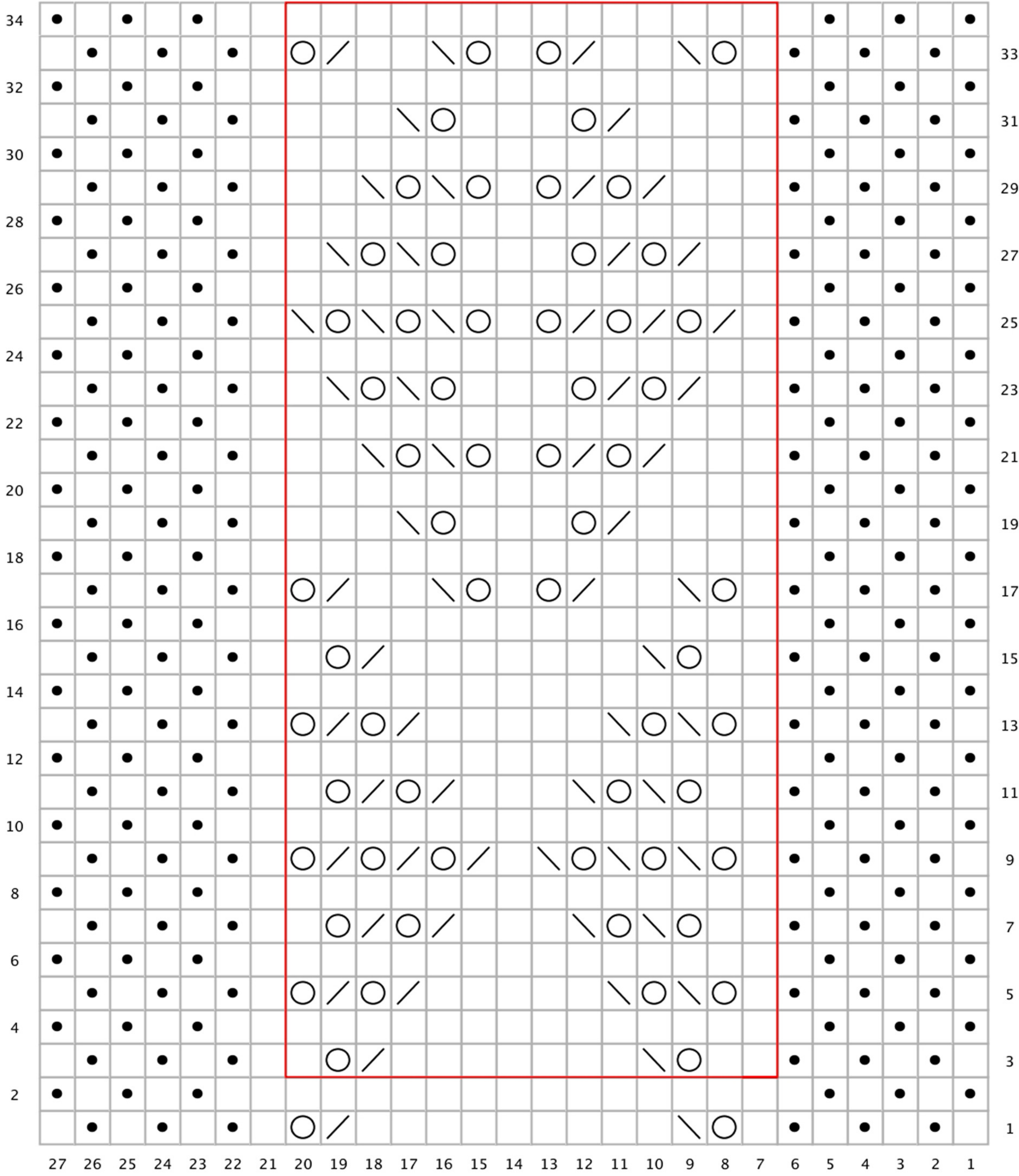
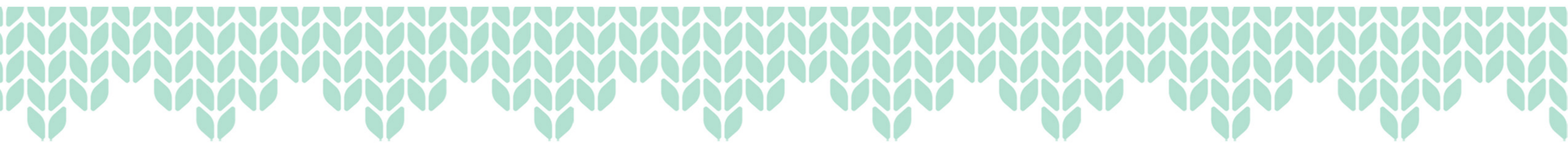
Row 31: (K1, p1) ×3, [k4, k2tog, yo, k3, yo, ssk, k3] ×13, (k1, p1) ×3, k1.

Row 33: (K1, p1) ×3, [(k1, yo, ssk, k2, k2tog, yo) ×2] ×13, (k1, p1) ×3, k1.

Repeat rows 3-34, ending on a row 32.

Then knit 10 rows Seed st.

Bind off loosely, weave in ends.



- Key
- RS: knit
WS: purl
 - RS: purl
WS: knit
 - RS: ssk
 - RS: k2tog
 - yo
 - repeat

*Happy knitting,
Nalhicb*

