



SIZES: One size.

Finished Measurements: 92" long x 14" wide

MATERIALS:

Wool Bam Boo by **Classic Elite** (50% wool, 50% bamboo; 50 gram ball = approx 118 yards)

• 7 balls 1691 Bay Blue

Needles

• One pair size US 7 (4.5 mm)

Or size to obtain gauge

• Waste yarn for provisional CO

GAUGE: 20 sts and 20 rows = 4" in Ivy Leaf Pattern. **Gauge is not critical for this project.**

SPECIAL TERMS:

tbl— Through the back loop.

yo— Yarn over (1 st increased).

yo2—Yarn over twice (2 sts increased).

k2tog: knit 2 sts together (1 st decreased).

ssk: slip 2 sts knitwise, one at a time to the right-hand needle, insert left-hand needle into the back of these 2 sts and knit them together (1 st decreased).

sk2p: slip 1 st, knit 2 sts together, slip the slipped stitch over the k2tog st (2 sts decreased).

PATTERN STITCHES:

Ivy Leaf Pattern: (multiple of 34 sts + 1)

Excerpted from "A Treasury of Knitting Patterns" by Barbara Walker.

(also, see chart on page 2)

Row 1: (RS) K1-tbl, *yo, k6, ssk, k1, k2tog, yo, k1, yo, sk2p, yo, k3, yo, sk2p, yo, k1, yo, ssk, k1, k2tog, k6, yo, k1-tbl; rep from * across.

Row 2: (WS) and all other WS rows—Purl, working (k1, p1) into every double yo of a preceding row.

Row 3: K1-tbl, *yo, k2, k2tog, yo, ssk, k6, yo, ssk, k2tog, yo, k1-tbl, yo, ssk, k2tog, yo, k6, k2tog, yo, ssk, k2, yo, k1-tbl; rep from * across.

Row 5: K3, *k2tog, yo, k1, yo, ssk, k1, k2tog, yo2, ssk, k1, k2tog, k1, yo, k1-tbl, yo, k1, ssk, k1, k2tog, yo2, ssk, k1, k2tog, yo, k1, yo, ssk, k5; rep from * across, end last rep k3.

Row 7: K2, *k2tog, [yo2, sk2p] twice, yo2, ssk, k1, k2tog, k2, yo, k1-tbl, yo, k2, ssk, k1, k2tog, yo2, [sk2p, yo2] twice, ssk, k3; rep from * across, end last rep k2.

Row 9: K1, *k2tog, yo, k6, yo, ssk, k1, k2tog, k3, yo, k1-tbl, yo, k3, ssk, k1, k2tog, yo, k6, yo, ssk, k1; rep from * across.

Row 11: K2tog, * [yo2, sk2p] twice, yo2, ssk, k1, k2tog, k4, yo, k1-tbl, yo, k4, ssk, k1, k2tog, yo2, [sk2p, yo] twice, sk2p; rep from * across, end last rep ssk instead of sk2p.

Row 13: K7, *yo, ssk, k1, k2tog, k5, yo, k1-tbl, yo, k5, ssk, k1, k2tog, yo, k13; rep from * across, end last rep k7.

Row 15: K2, *yo, sk2p, yo, k1, yo, ssk, k1, k2tog, k6, yo, k1-tbl, yo, k6, ssk, k1, k2tog, yo, k1, yo, sk2p, yo, k3; rep from * across, end last rep k2.

Row 17: K1-tbl, *yo, ssk, k2tog, yo, k6, k2tog, yo, ssk, k2, yo, k1-tbl, yo, k2, k2tog, yo, ssk, k6, yo, ssk, k2tog, yo, k1-tbl; rep from * across.

Row 19: K1-tbl, *yo, k1, ssk, k1, k2tog, yo2, ssk, k1, k2tog, yo, k1, yo, ssk, k5, k2tog, yo, k1, yo, ssk, k1, k2tog, yo2, ssk, k1, k2tog, k1, yo, k1-tbl; rep from * across.

Row 21: K1-tbl, *yo, k2, ssk, k1, k2tog, [yo2, sk2p] twice, yo2, ssk, k3, k2tog, yo2, [sk2p, yo2] twice, ssk, k1, k2tog, k2, yo, k1-tbl; rep from * across.

Row 23: K1-tbl, *yo, k3, [ssk, k1, k2tog, yo, k6, yo] twice, ssk, k1, k2tog, k3, yo, k1-tbl; rep from * across.

Row 25: K1-tbl, *yo, k4, ssk, k1, k2tog, [yo2, sk2p] 5 times, yo2, ssk, k1, k2tog, k4, yo, k1-tbl; rep from * across.

Row 27: K1-tbl, *yo, k5, ssk, k1, k2tog, yo, k13, yo, ssk, k1, k2tog, k5, yo, k1-tbl; rep from * across.

Row 28: Rep Row 2.

Rep Rows 1–28 for Ivy Leaf.

SCARF

Using Provisional CO method, CO 77 sts. **Est Patt:** (WS) [P1, k1] twice (keep in rib throughout); purl across to last 4 sts; [k1, p1] twice (keep in rib throughout). Next Row: (RS) [K1, p1] twice, work Ivy Leaf Pattern across center 69 sts; [p1, k1] twice. Cont as est until 8 repeats of the pattern are completed. Work 12 more rows, end WS row 12 of Ivy Leaf Patt. BO all sts knitwise. With RS facing, pick up sts from holder—77 sts. Est Patt as for other side on WS row; **note:** sts may be twisted from the CO, be sure to work them so they do not twist. Cont as for other side, ending on Row 12 of Ivy Leaf Patt. BO all sts.

ABBREVIATIONS

approx—approximately

BO—bind off

CO—cast on

cont—continue

est—establish(ed)

rep—repeat

k—knit

k2tog—See Special Terms

p—purl



FINISHING

Block piece to measurements. Weave in ends.

patt—pattern

RS—right side

sk2p—See Special Terms

ssk—See Special Terms

st(s)—stitch(s)

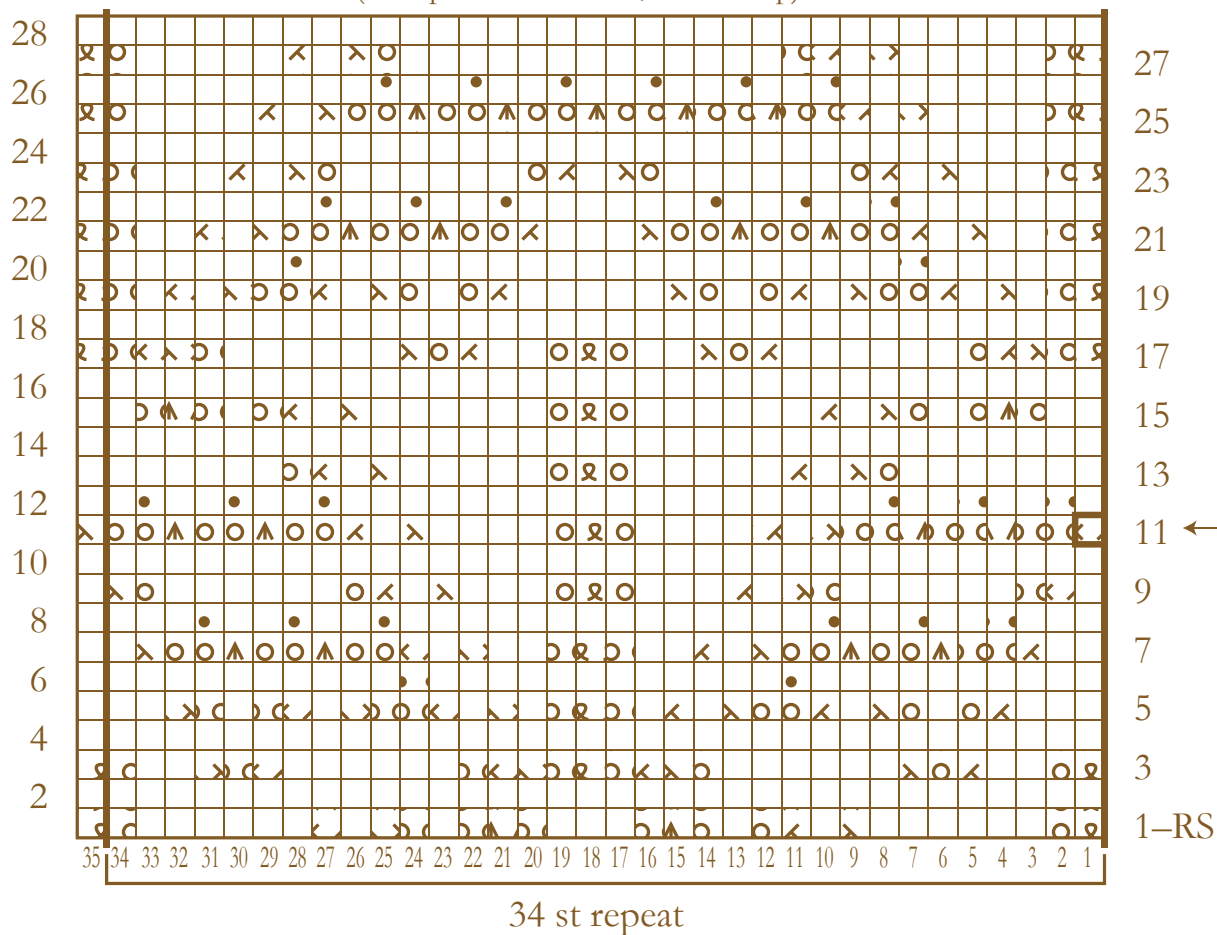
tbl—through the back loop

WS—wrong side

yo—See Special Terms

Ivy Leaf Chart

(multiple of 34 sts + 1; 28 row rep)



- | | |
|-------------------------------------------------|------------------------------------------------------------------------------------------|
| <input type="checkbox"/> Knit on RS, purl on WS | <input type="checkbox"/> SSK—Slip 2 sts to right hand needle, knit these 2 sts together. |
| <input type="checkbox"/> Purl on RS, knit on WS | <input type="checkbox"/> K2tog—Knit 2 sts together |
| <input type="checkbox"/> Knit 1 tbl | <input type="checkbox"/> Slip 1 st to right hand needle, k2tog, pass slipped stitch over |
| <input type="checkbox"/> Yarn over | |