

Little Cotton Rabbits

knitted Easter egg decoration



Materials:

- 4ply/fingering weight yarn in a variety of colours
- Toy stuffing or a 7cm/3" tall polystyrene egg

Notions:

- 2.75mm (US 2) needles
- Tapestry needle

Finished size:

approx 7cm (3 inches) in height
and 16cm (6 inches) in circumference

Gauge:



7 stitches x 10 rows to 1 inch

© Copyright, All rights reserved. No part of this pattern may be reproduced in any form.
This pattern is supplied for your personal and non-commercial use only.

This pattern for a decorative egg is knitted flat and then seamed using mattress stitch. If you prefer you can knit the egg in the round with DPNS or a circular needle. If you do choose to knit it in the round please cast on 2 less stitches and ignore the first and last stitch of every row as they are intended as a seam selvedge. You can stuff the finished egg with polyfil /wool /cotton wadding or it will fit around a polystyrene egg (see here for [supplies within the UK](#)). If you knit the egg in the round and are using a polystyrene egg to stuff, you may find that you have to fit the egg in half way through and finish the knitting around it.

You can knit the egg in a single colour or there are some pattern charts that you can use to make the central band of the egg more decorative.

Abbreviations:

These increase methods are described in detail in the excellent knitting help website:

<https://www.knittinghelp.com/videos/increases>

KLL : KNIT LEFT LOOP. Increase 1 stitch by knitting into the stitch that is 2 below the one you have just knitted...

insert tip of left needle into the stitch from behind and bring the loop onto the left needle. Insert the tip of the right needle into the back loop and knit, so making an extra stitch. This is the most invisible increasing method I've found so far but if you prefer you can substitute M1L or M1A below.

M1A : MAKE 1 AWAY. Make a loop with the working yarn so the tail is pointing backwards/away from you

M1L : MAKE 1 LEFT. A nice tight method of making an extra stitch. With the left hand needle pick up the connecting strand between the two needles and knit into the back of the loop to create an extra stitch. If you find this too tight for your liking you can substitute M1A (make one away) which will give a looser increase.

This decrease method is described in detail in the excellent knitting help website:

<https://www.knittinghelp.com/videos/decreases>

K2TOG : Knit 2 stitches together

Instructions for a plain coloured egg:

Starting at the flattish bottom of the egg and finishing at the more pointed top, use your chosen yarn colour and 2.75mm (US 2) needles to cable cast on 11 stitches, leaving a tail of 8 inches for seaming with later.

row 1: (wrong side) Purl
row 2: K2, (KLL, K1) 8 times, K1 (19 stitches)
row 3: Purl
row 4: K2, (KLL, K1) 16 times, K1 (35 stitches)
row 5: Purl
row 6: Knit
row 7: Purl
row 8: K3, KLL, (K2, KLL) 6 times, K3, KLL, (K2, KLL) 7 times, K3 (50 stitches)
row 9: Purl
rows 10-21: Beginning with a Knit row and ending with a Purl, work 12 rows of stocking stitch (Knit on the right side and Purl on the reverse).

Alternatively you can work a patterned section over **rows 10-21**, see pages 3-5 for some suggestions of patterns to use.

Or simply use a single contrasting colour for the middle 12 rows.

row 22: Knit
row 23: Purl
row 24: K3, K2tog, (K2, K2tog) 11 times, K1 (38 stitches)
row 25: Purl
row 26: K2, K2tog, (K1, K2tog) 11 times, K1 (26 stitches)
row 27: Purl
row 28: Knit
row 29: Purl
row 30: K1, (K2tog) 12 times, K1 (14 stitches)
row 31: Purl

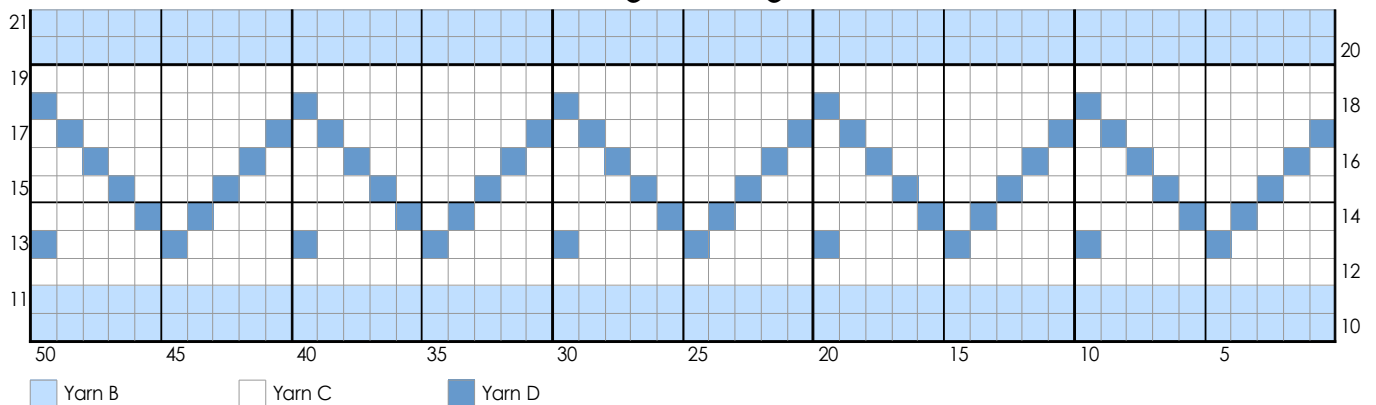
Cut the work from the ball, leaving a tail of around 8 inches long. Thread this tail end through the stitches on needle, sliding them off the needle as you do so and then sew back through the first stitch in order to close the circular seam at the top of the egg, but leave the seam loose for now.

Continue by following the finishing instructions on page 5.

Charts and instructions:

These charts and instructions are for the band running around the centre of the egg, from **row 10-21**.

Zig-zag:



row 10: Change to Yarn B, Knit

row 11: Purl

row 12: Change to Yarn C, Knit

row 13: Join in **Yarn D**, (P1, P4) 10 times

row 14: K3, (K1, K1, K1, K7) 4 times, K1, K1, K1, K4

row 15: P3, (P1, P3, P1, P5) 4 times, P1, P3, P1, P2

row 16: K1, (K1, K5, K1, K3) 4 times, K1, K5, K1, K2

row 17: P1, (P1, P7, P1, P1) 4 times, P1, P7, P1

row 18: (K9, K1) 5 times

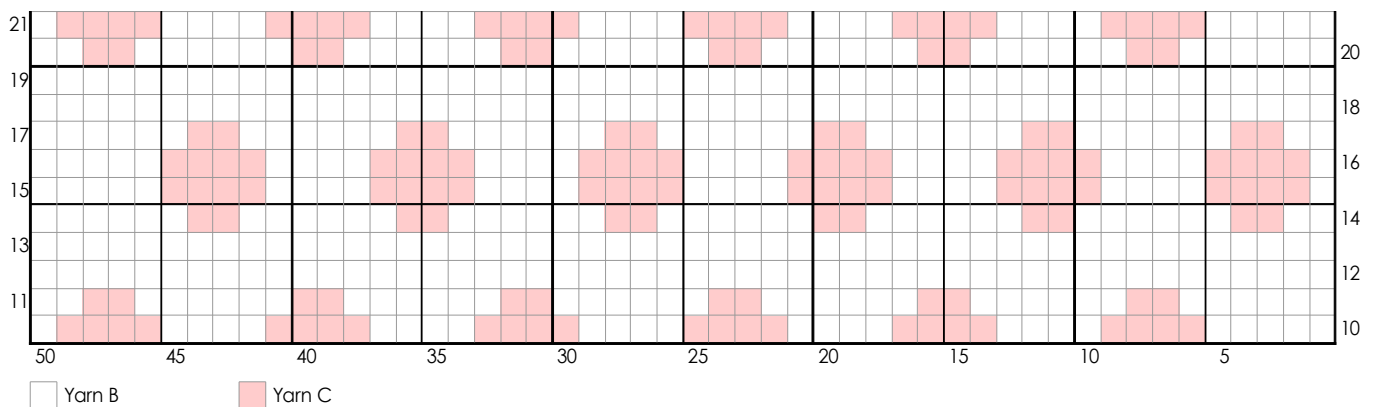
row 19: Purl in Yarn C only

row 20: Change to Yarn B and Knit

row 21: Purl

Continue by using the instructions for row 22 onwards on Page 2, using the same coloured yarn as you used for rows 1-9.

Polka dots:



row 10: Change to Yarn B and K5, Join in **Yarn C** and K4, (K4, K4) 5 times, K1

row 11: P2, (P2, P6) 6 times

row 12: Knit in Yarn B only

row 13: Purl in Yarn B only

row 14: K2, (K2, K6) 6 times

row 15: P5, (P4, P4) 5 times, P4, P1

row 16: K1, (K4, K4) 5 times, K4, K5

row 17: (P6, P2) 6 times, P2

row 18: Knit in Yarn B only

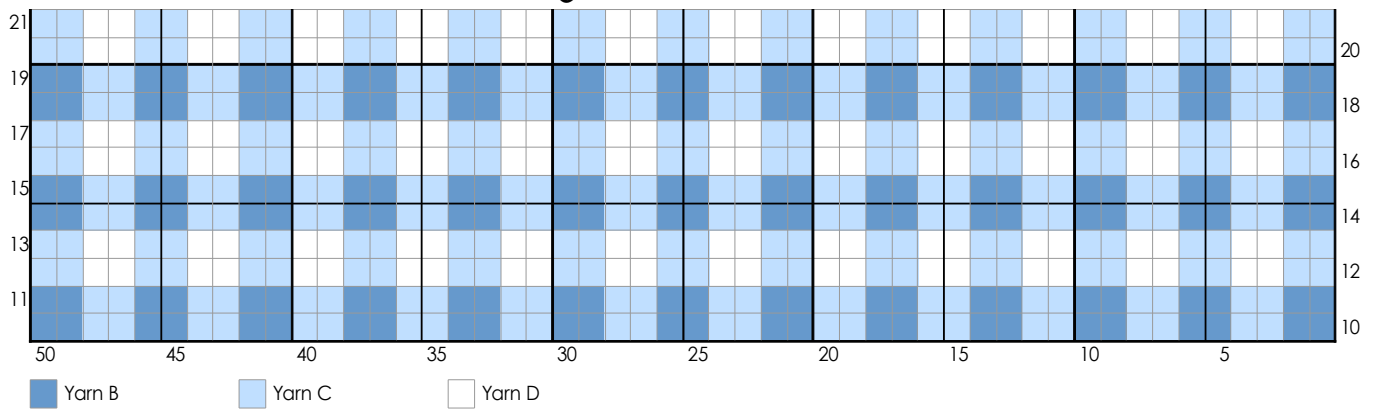
row 19: Purl in Yarn B only

row 20: (K6, K2) 6 times, K2

row 21: P1, (P4, P4) 5 times, P4, P5

Continue by using the instructions for row 22 onwards on Page 2, using the same coloured yarn as you used for rows 1-9.

Gingham check:



row 10: Change to **Yarn B** and **K2**, Join in **Yarn C** and **K2, (K2, K2)** 11 times, **K2**

row 11: (**P2**, **P2**) 12 times, **P2**

row 12: Join in Yarn D, (**K2**, **K2**) 12 times, **K2**

row 13: (**P2**, **P2**) 12 times, **P2**

row 14: As row 10

row 15: As row 11

row 16: As row 12

row 17: As row 13

row 18: As row 10

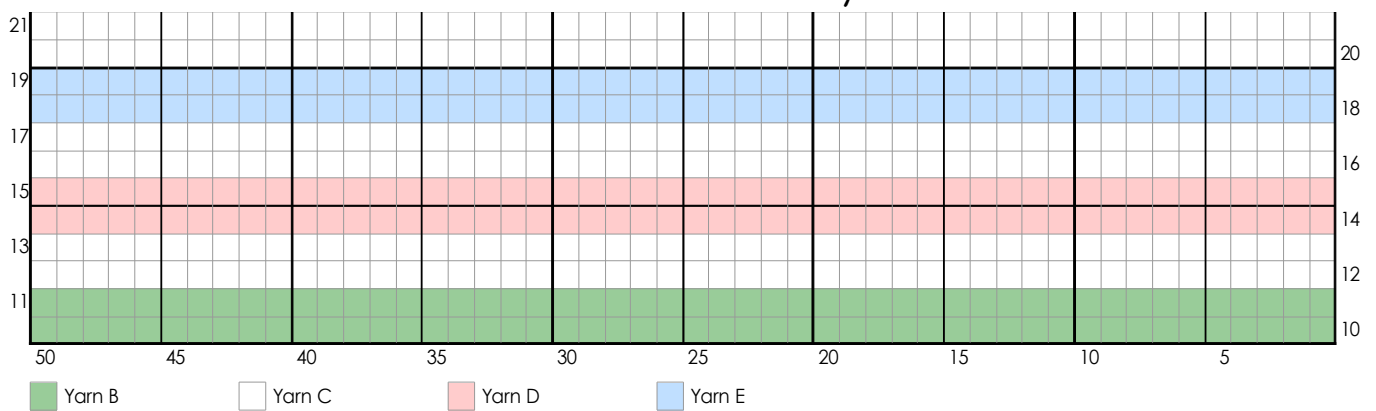
row 19: As row 11

row 20: As row 12

row 21: As row 13

Continue by using the instructions for row 22 onwards on Page 2, using the same coloured yarn as you used for rows 1-9.

Colourful stripes:



row 10: Change to Yarn B, Knit

row 11: Purl

row 12: Change to Yarn C, Knit

row 13: Purl

row 14: Change to Yarn D, Knit

row 15: Purl

row 16: Change to Yarn C, Knit

row 17: Purl

row 18: Change to Yarn E, Knit

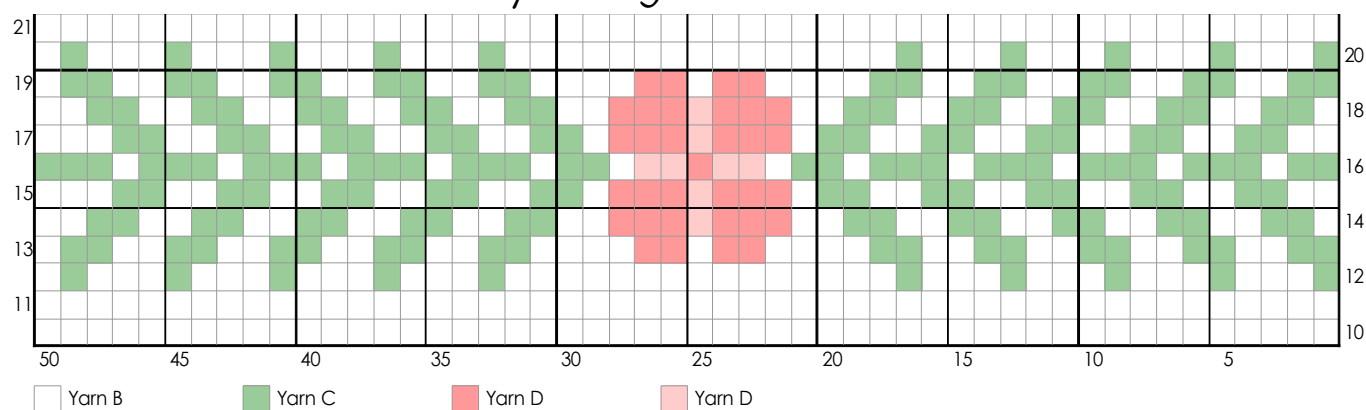
row 19: Purl

row 20: Change to Yarn C, Knit

row 21: Purl

Continue by using the instructions for row 22 onwards on Page 2, using the same coloured yarn as you used for rows 1-9.

Spring flower:



row 10: Change to Yarn B, Knit

row 11: Purl

row 12: Join in Yarn C, (K1, K3) 4 times, K1, K15,
(K1, K3) 4 times, K1, K1

row 13: P1, (P2, P2) 4 times, P2, P4, P2, P1, P2, P4,
(P2, P2) 4 times, P2,

row 14: K1, (K2, K2) 5 times, K3, K1, K3, K2
(K2, K2) 5 times

row 15: P3, (P2, P2) 4 times, P2, P1, P3, P1, P3, P1,
(P2, P2) 5 times

row 16: K2, (K1, K3) 4 times, K1, K2, K1, K2, K1, K2,
K1, K2, (K1, K3) 5 times

row 17: work as row 15

row 18: work as row 14

row 19: work as row 13

row 20: work as row 12

row 21: Purl in Yarn B only

Continue by using the instructions for row 22 onwards on Page 2, using the same coloured yarn as you used for rows 1-9.

Finishing instructions:

If you would like to hang the egg as a decoration then cut a length of ribbon and knot the cut ends together to make a hanging loop.

Next pull the cast off tail end from the top of the egg to begin gathering in the circular top seam. Thread the ribbon loop through this gathered edge, leaving the knotted part inside.

Tightly pull the cast off tail end to tightly gather in the top of egg, then over-sew/whip stitch once to prevent it loosening again. Continue using this tail end to begin joining around 1 inch of the side seam using mattress stitch. There is a tutorial on mattress stitch seaming here:

https://littlecottonrabbits.typepad.co.uk/my_weblog/2017/05/a-mattress-stitch-tutorial.html

Next turn your attention to the bottom end of the egg. Thread the tapestry needle with the cast on tail and use it to sew through the loops from the cast on edge. Pull up tightly to close the bottom circular seam and then begin closing the side seam. If you are fitting the cover around a polystyrene egg, just sew around half an inch of seam and close the rest of the seam after the polystyrene egg is in place. If you are stuffing with polyfil or wool stuffing then leave a gap of around 2 inches in the seam through which to add the stuffing. Once your egg is stuffed finish closing the side seam, tie off the ends and thread them through the egg before trimming off any excess.