

Chunky Antler Headband

The Chunky Antler Headband is a fun take on the classic antler cable pattern. The cable design creates a beautiful antler design and with chunky yarn, it works up fast! It's worked flat, but it's virtually seamless. The skills needed for this pattern are provisional cast on, cabling, and grafting in pattern. For information on each of these skills, please see the Notes section.

Materials

- ★ 1 skein of Lion Brand Hometown USA yarn or other super bulk (6) yarn (approximately 60 yards)
- ★ At least 1 ½ yards of scrap yarn - super bulky weight
- ★ US size 11 (8 mm) knitting needles or size needed to obtain gauge
- ★ Cable Needle
- ★ Tapestry Needle
- ★ US size L/11 (8 mm) crochet hook



Size

Adult size is approximately 4 in (10 cm) wide and 20 in (50 cm) circumference.
Child size is approximately 4 in (10 cm) wide and 18 in (46 cm) circumference.

Gauge

12 sts x 16 rows = 4 in (10 cm) in stockinette st



Abbreviations

St(s).....Stitch(es)
RS.....Right Side
K.....Knit

CN.....Cable Needle
WS.....Wrong Side
P.....Purl

2/2LC.....slip 2 sts onto CN, hold in front, k next 2 sts, k 2 from CN
2/2RC.....slip 2 sts onto CN, hold in back, k next 2 sts, k 2 from CN

Notes

This pattern uses cabling, provisional cast on, and grafting in pattern. For instructions on how to cable, please visit this [blog post](#) or this [youtube video](#). For instructions on how to do a provisional cast on, please visit this [blog post](#) or this [youtube video](#). For instructions on how to graft in pattern, please visit this [blog post](#) or this [youtube video](#).

Both the written pattern and a chart of the cable pattern are provided. The chart is located at the end of this pattern.

Pattern

Using crochet hook and 1 knitting needle, cast on 16 sts using scrap yarn and provisional cast on.

Row 0 (set up row): k 16 sts

Row 1 (RS): k 4, 2/2RC, 2/2LC, k 4, turn.

Row 2 (WS): p 16 sts, turn.

Row 3: k 2, 2/2RC, k4, 2/2LC, k 2, turn.

Row 4: repeat row 2

Row 5: 2/2RC, k 8, 2/2LC, turn.

Row 6: repeat row 2

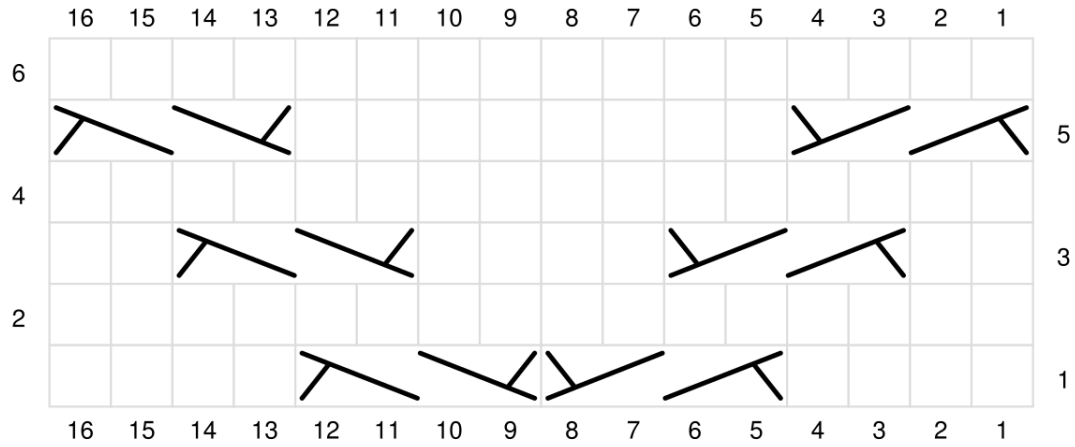
Repeat rows 1-6 until piece measures about 20 in (50 cm) for adult size and 18 in (46 cm) for child size, ending on row 5. Cut yarn leaving long tail (at least 3 times the width of the headband).

Remove provisional cast on and put sts on second needle, making sure both needles are facing the same direction (both points facing the same way). Bring both needles together with WS together to graft (RS should be facing you). Using tapestry needle, graft together in pattern to create seamless finish. Weave ends after grafting.

Grafting row: k 16 sts



Cable Chart



RS: Knit
WS: Purl



RS: Purl
WS: Knit



RS: garter stitch
WS: K



slip 2 sts onto CN, hold in front, k next 2 sts, k 2 from CN



slip 2 sts onto CN, hold in back, k next 2 sts, k 2 from CN

Please do not reproduce, distribute, or resell this pattern or the pictures within. You may sell completed objects made with this pattern in person such as at craft shows, consignment shops, and flea markets.